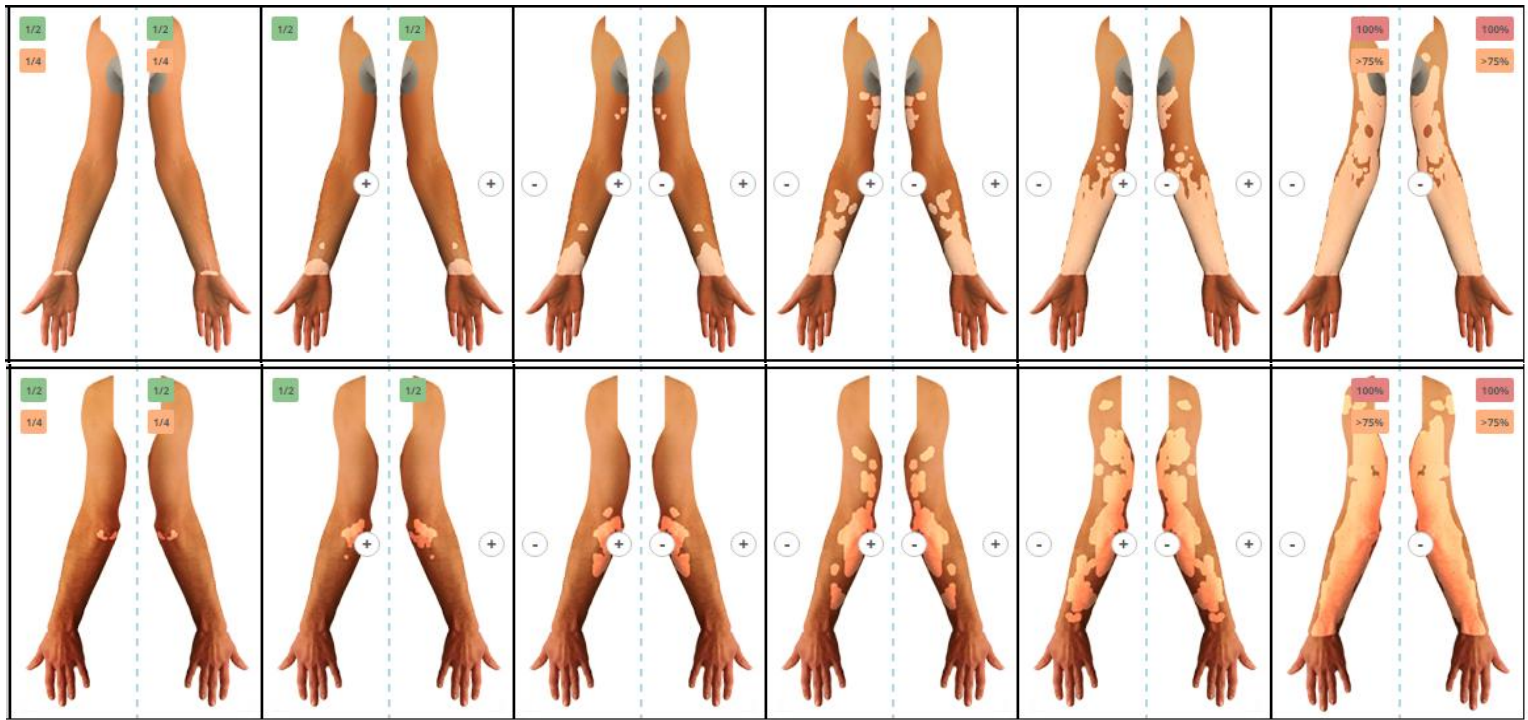


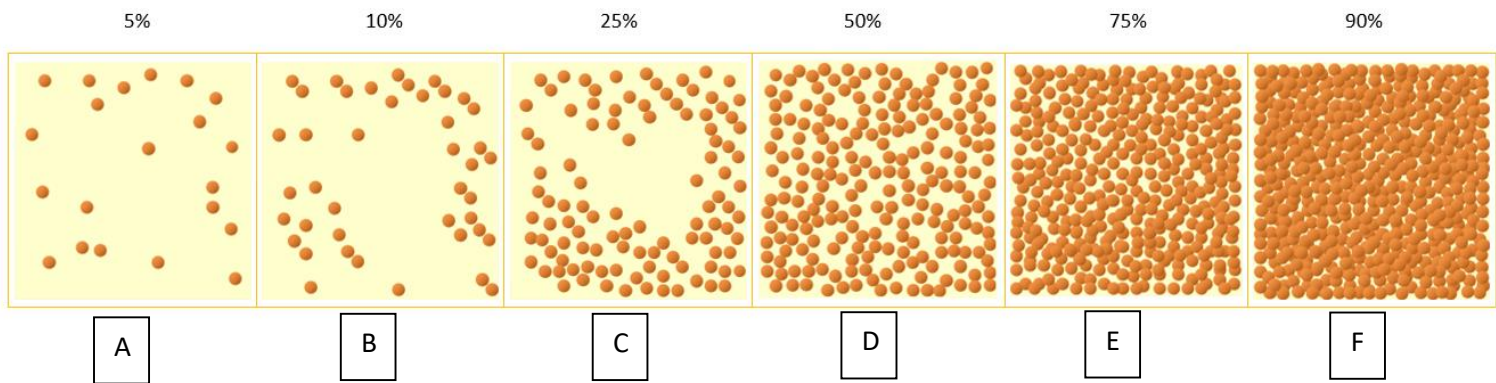
# VITILIGO EXTENT SCORE PLUS (VESplus)

Please select of each area 1 picture, which best represents the extent of the vitiligo lesions. You can also choose a second option (if necessary): e.g. - and + (less or more than the picture);  $\frac{1}{2}$  and  $\frac{1}{4}$  (half or  $\frac{1}{4}$  of involved area). The  $>75\%$  option can be selected if the involved area is more than shown on the picture, but less than 100% (i.e. complete depigmentation). To add perifollicular (re)pigmentation to a selected picture you can write the corresponding character of the pictogram (e.g. A, B..F) from the scale (page 2) into the selected picture. For the final score please use the calculator: [www.vitiligo-calculator.com](http://www.vitiligo-calculator.com)

Name/Number pt:.....  
 Date:.....  
 Physician:.....  
 Total score:.....  
[www.vitiligo-calculator.com](http://www.vitiligo-calculator.com)

## Perifollicular (re)pigmentatie scale



© 2015. Nanja van Geel, Reinhart Speeckaert. All rights reserved.