

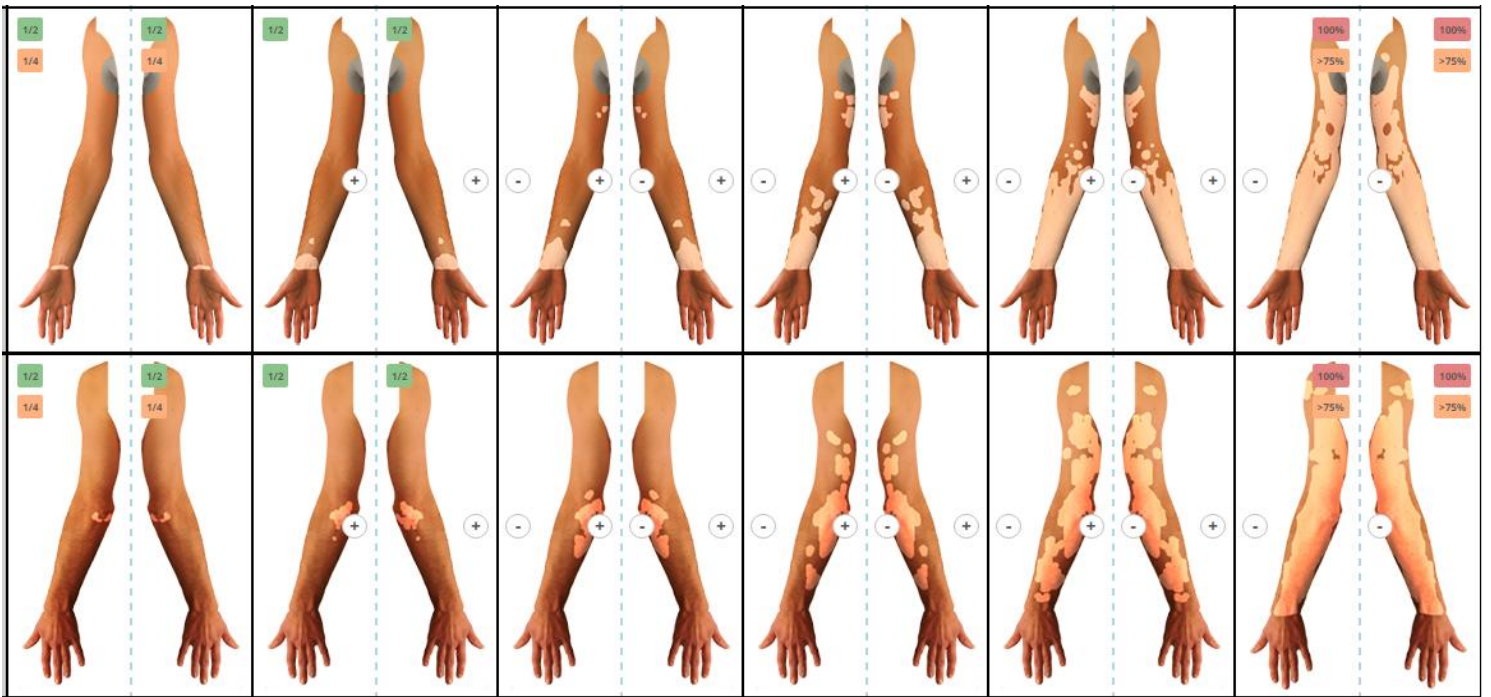
VITILIGO EXTENT SCORE (VES)

Please select for each area 1 picture, which best represents the extent of the vitiligo lesions.

You can also choose a second option (if necessary): e.g. if the extent is half (1/2) or a quarter (1/4) of the involved area in the picture or slightly less (-) or more (+) than the involved area in the picture. The ">75%" option can be selected if the involved area is more than shown in the last picture, but less than 100% (i.e. complete depigmentation). For the final score please use the calculator: www.vitiligo-calculator.com

Date:.....
Name/Number pt:.....
Skin phototype (Fitzpatrick) I – II – III – IV – V – VI
Physician:.....
Total score (www.vitiligo-calculator.com).....

| | | | | | |
|--|--|--|--|--|--|
| | | | | | |
| | | | | | |
| | | | | | |
| | | | | | |
| | | | | | |
| | | | | | |
| | | | | | |
| | | | | | |
| | | | | | |



© 2015. Nanja van Geel, Reinhart Speeckaert. All rights reserved.